

HCO & G

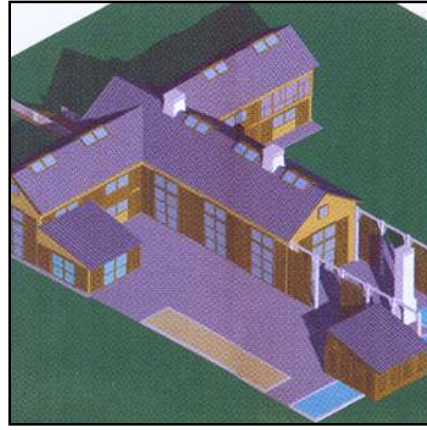
Hamptons Cottages and Gardens

SEPTEMBER 2005

Idea House 2005

LIVING FOR THE FUTURE

Cleaning House | Nautical Nirvana | Arts & Crafts Reborn



THE COMPETITION

Fred Stelle

The Proposed Contemporary design was conceived as a series of pavilions with the main entrance through a two-story concrete wall, sky lit from above, which provides a threshold, as well as a barrier to life left behind.

The master bedroom and study are separate from the main space, providing additional privacy in the warmer weather. Glass walls would pivot to enclose the breezeway connecting to the to the main space during the colder months. Wooden moveable sunscreens on the south patio provide wind and sun protection. The second floor would be accessed by floating stairs, visible from the front entry court and leading to a translucent walkway above.

Bedrooms would be arranged allowing for total flexibility, either independent guest rooms or grouped together as suites. The barn would be simply restored as a seasonal entertaining space and a folly on the property.

Erica Broberg

Can a house respond to the complex fabric of the Hamptons? “aLIVE” house is an exploration into the house as a muse. As catharsis. Representative of the myriad of lives each of us lives here. Alone. Party for 200. Romantic dinner. This proposed design was for a house that would be elastic -- opened or closed, stretched or compacted.

Rooms could be created or expanded, moved or removed. Sunlight could be altered. Views could be changed. Beds slide. Furniture rotates to focus on the fireplace, the TV or the view. The most experimental of the three concepts, the “aLIVE” featured two-story walls of shutters that could slide along tracks to close the house or follow tracks along an extension of the post- and - beam original barn to create flexible outdoor rooms.

Among the many mobile architectural features, the dining room may have been the most innovative -- it would sit snug in a corner of a T-shaped house or ride a rail system to a destination in the garden as a pavilion.

Hugh Huddleson

In the winning design, the barn was a point of departure for the design and anchors it in form with the new living room roughly the same size and location as the original barn, which gives it exceptional art walls. The wings of the house that flank the ventral “barn” are treated as separate pavilions or building blocks, reminiscent of the assemblage of structures that might be found on a local farm. “A house should look comfortable amongst his neighbors,” explains Huddleson. The house is stretched along a west-to-east axis, in many places only one room deep, to take full advantage of the south sun. Inside, the floor plan addresses issues that confront people today, from closets everywhere to room configurations that function equally well when the house is full of visitors at a party or when future homeowners are enjoying quiet weekends at home.